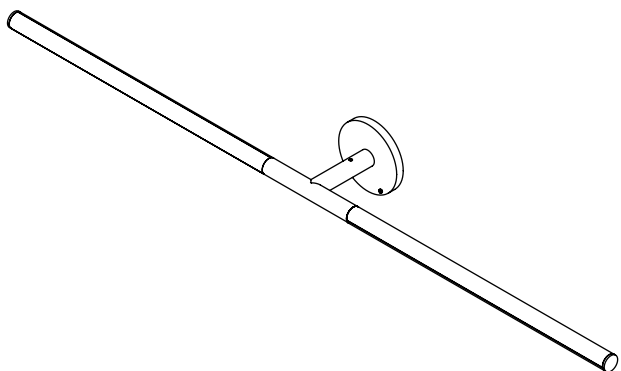


# Orbita

## Double Sconce Installation Instructions

OPTIQUE



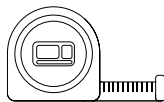
### ⚠ Important Information

1. These instructions show a typical installation.
2. This product is wall mount.
3. This product mounts directly to drywall.

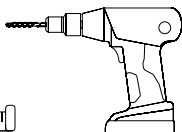
### ⚙ Required Tools



#2 PHILLIPS  
SCREWDRIVER



TAPE MEASURE



POWER DRILL



LEVEL BAR



1.5MM ALLEN KEY

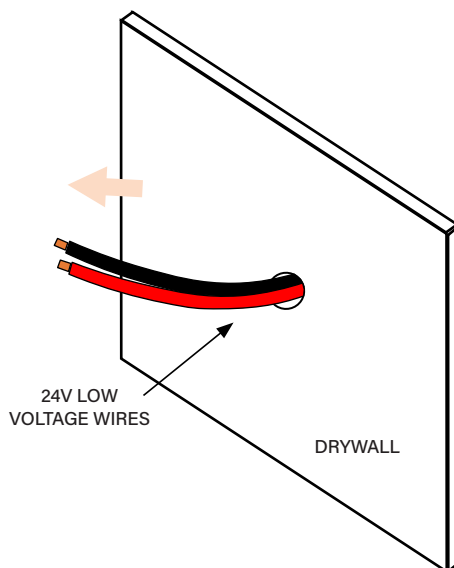
### ✂ Option One: Direct Wire Mount

01.

Position the driver in a suitable location within 30 feet of the desired fixture location.

02.

Drill 1/2" hole in drywall at the desired location and bring a 24V low-voltage in-wall rated wire through the hole in the wall.



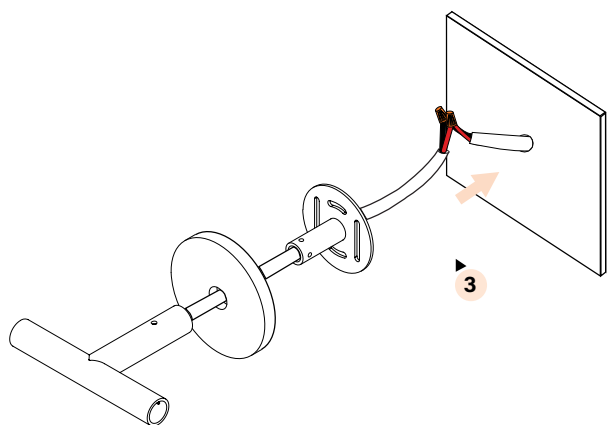
03.

Pre thread the wire from the T connector through the canopy cover and through the canopy mount. Connect a 24V low-voltage wire to the wire lead from the T connector. Red is positive (+) and black is negative (-).

# Orbita

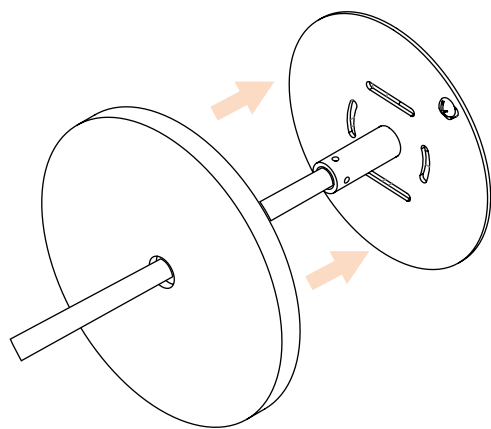
## Double Sconce Installation Instructions

OPTIQUE



04.

Pass connected low-voltage wires and wire nuts through the hole in the drywall.

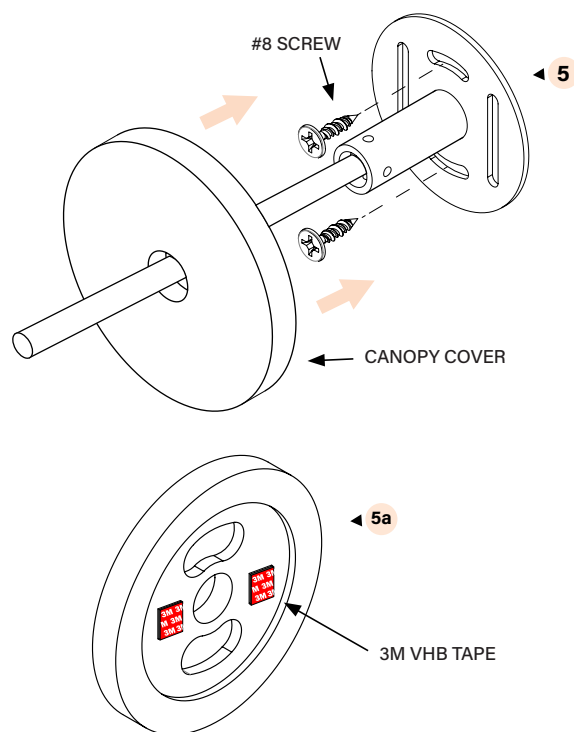


05.

Use two standard #8 wood screws to attach the canopy mount to the wall.

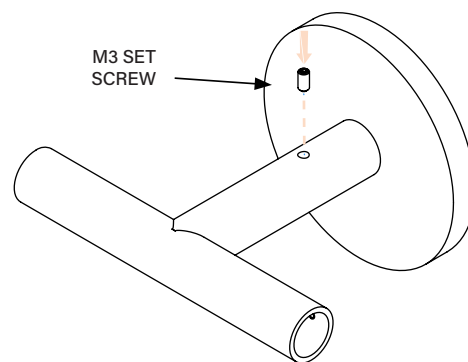
NOTE: Ensure that the threaded hole is facing straight up.

- a. Secure the canopy cover to the canopy mount with 3M VHB tape.



06.

Slide the T connector onto the canopy mount. Choose either a horizontal or vertical orientation. Fasten the T connector to the canopy mount with the M3 set screw.



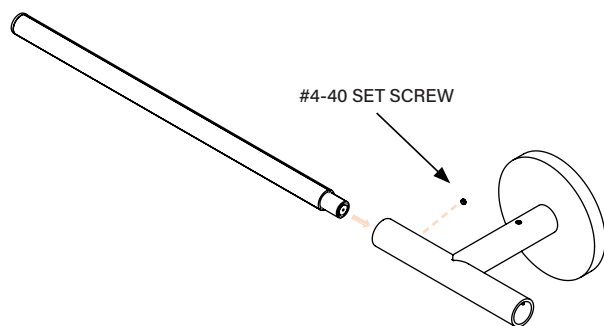
# Orbita

## Double Sconce Installation Instructions

OPTIQUE

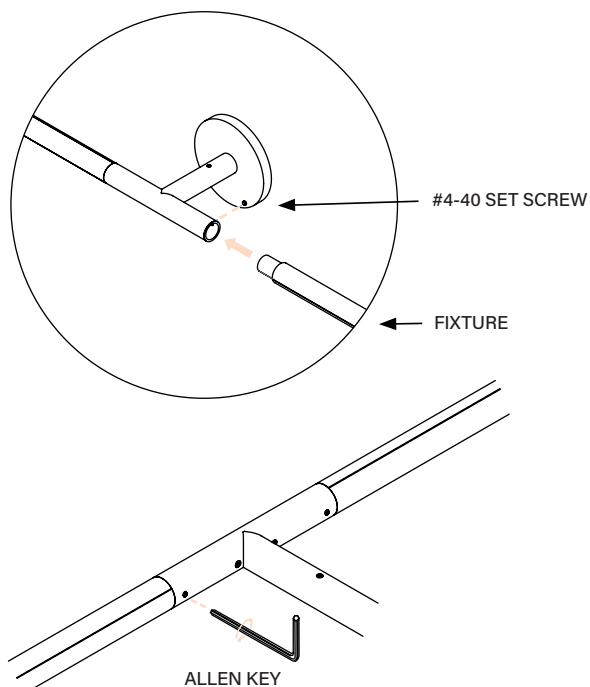
07.

Snap in one fixture into the T connector. Rotate to the desired orientation and then secure with the #4-40 set screw.



08.

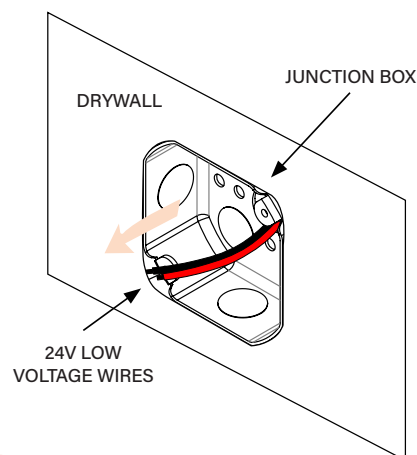
Snap the next fixture into the T connector. Rotate to the desired orientation and then secure with the #4-40 set screw.



### Option Two: Junction Box Mount

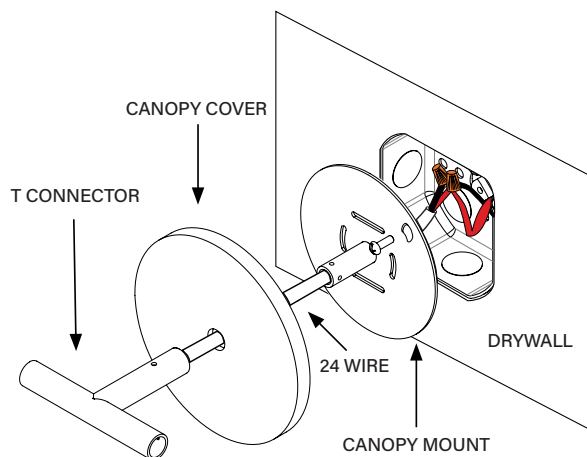
01.

Install the driver and run 24V low-voltage in-wall rated wire to the desired junction box location. Thread wire through the junction box.



02.

Pre-thread the wire from the T connector through the canopy cover and through the canopy mount. Connect a 24V low-voltage wire to the wire lead from the T connector. Red is positive (+) and black is negative (-).



# Orbita

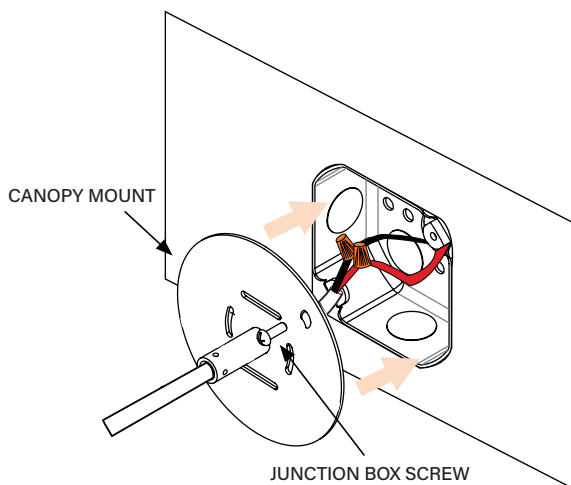
## Double Sconce Installation Instructions

OPTIQUE

### 03.

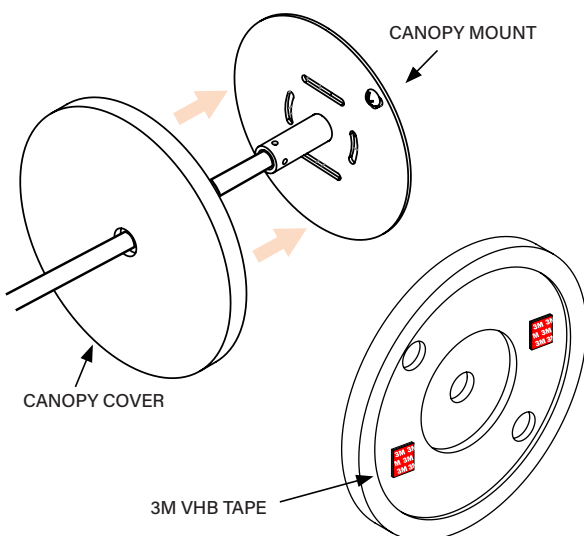
Place connected low-voltage wires in the junction box.

- a. Secure the canopy mount to the junction box with the junction box screws. Ensure that the threaded hole is facing straight up.



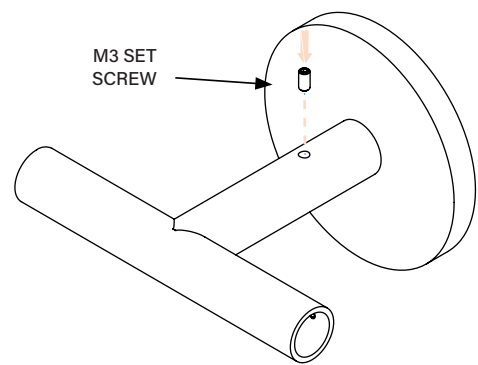
### 04.

Secure the canopy cover to the canopy mount with 3M VHB tape.



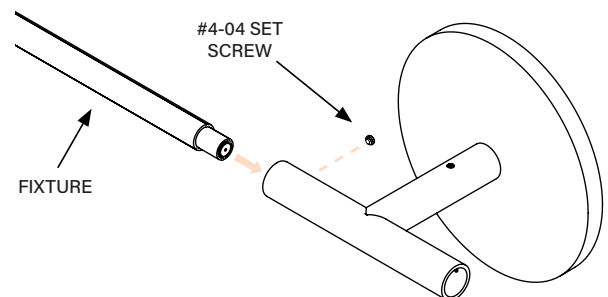
### 05.

Slide the T connector onto the canopy mount. Choose either a horizontal or vertical orientation. Fasten the T connector to the canopy mount with the M3 set screw.



### 06.

Snap in one fixture into the T connector. Rotate to the desired orientation and then secure with the #4-40 set screw.



# Orbita

## Double Sconce Installation Instructions

OPTIQUE

07.

Snap the next fixture into the T connector. Rotate to the desired orientation and then secure with the #4-40 set screw.

